

# Fall 10<sup>th</sup> Day Enrollment Report

Office of Institutional Research

September 2009

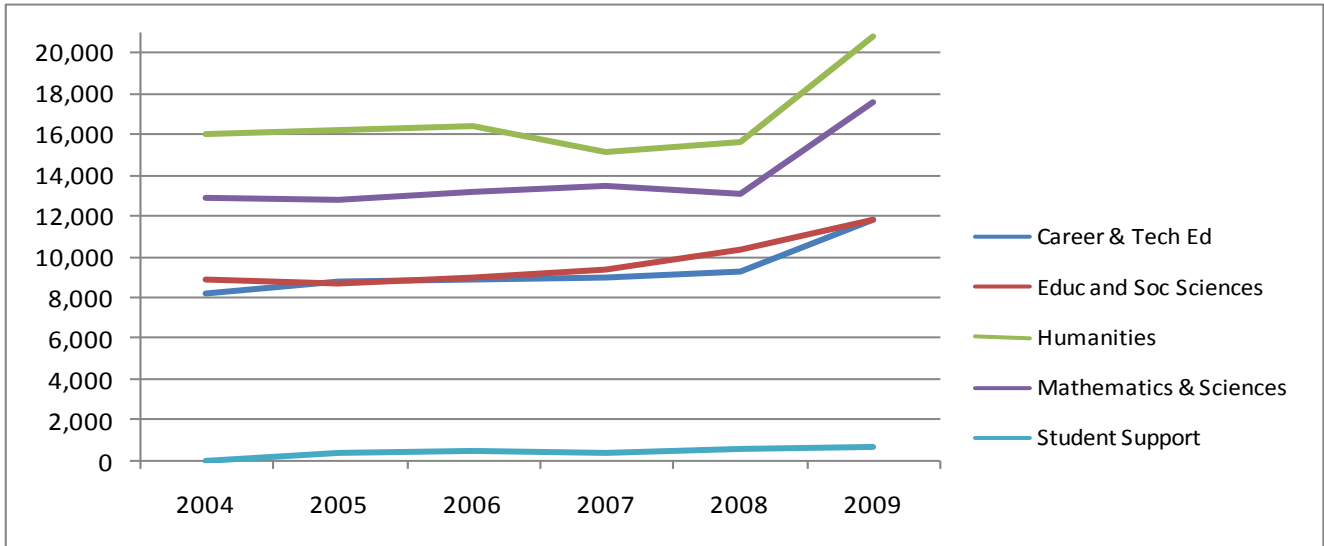
## Summary

- Fall enrollment has increased relative to prior years (see Figure 1 and Table 1).
  - Total headcount is 6,811, a 27% increase over 2008 and 28% higher than 2004.
  - Total credit hours are 63,335, a 29% from 2008 and 37% higher than 2004.
- With the exception of age, student characteristics such as educational objective, sex, and racial/ethnic group are relatively stable. This continues a trend also noted in the Summer 10<sup>th</sup> Day Enrollment Report.
  - Compared to five years ago, there is a greater proportion of young students (age 19 and younger) and a smaller proportion of students age 35 to 55 among the 2009 fall students.
- A somewhat higher proportion of fall students were new to MCC compared to prior years (33% new in fall 2009 compared to 26 to 29% new in 2004 through 2008).
- Compared to five years ago, students are taking more credits in day courses (68% of total credits vs. 59% of total credits in 2004) and relatively fewer credits in evening courses (22% of total credits vs. 32% of total credits in 2004).
- There has been a large increase in enrollment in hybrid courses, online courses, and learning communities in the past five years, though the proportion of total credits generated by these delivery methods has remained relatively stable.
- All divisions show net increases in credit hour enrollment relative to last year and five years ago. The largest growth from last year was seen in Mathematics and Sciences (33%) and Humanities (33%).
- Compared to five years ago, there are more students enrolled in Transfer/Baccalaureate (14%), Business (20%) and Human and Professional Services (112%) programs, while there are fewer students enrolled in Technology (-8%) programs (see Table 3). The large increase in Human and Professional Services majors is driven by the advent of the Registered Nursing program as well as growth in the Fire Science program.

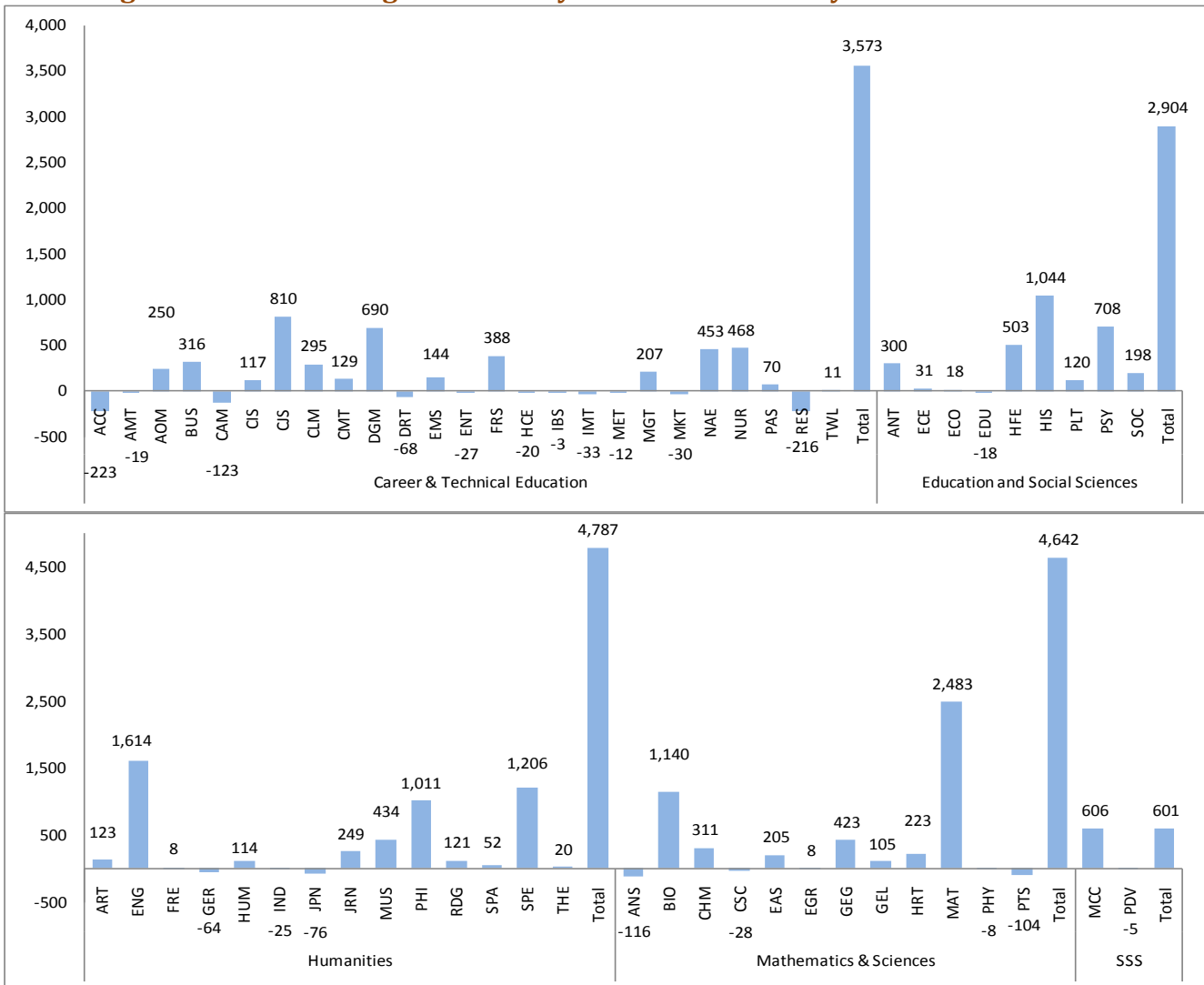
Do you have any questions?  
Any suggestions to make this report better?  
Please contact Joe Baumann, Director of  
Institutional Research, at ext. 8915 or via  
email at [jbaumann@mchenry.edu](mailto:jbaumann@mchenry.edu).

PAGE	CONTENTS
1	Summary
2	Figure 1: Fall 10 <sup>th</sup> Day Enrollment by Division
2	Figure 2: 5-Year Change in 10th Day Fall Credit Hours by Division and Prefix
3	Table 1: Enrollment Trends, Fall 2004 to Fall 2009
4-5	Table 2: 10 <sup>th</sup> Day Credit Hours by Division and Prefix, Fall 2004 to Fall 2009
6-7	Table 3: Headcount Enrollment by Program, Fall 2004 to Fall 2009
8	Figure 3: Student Characteristics

**Figure 1: Fall 10th Day Enrollment by Division**



**Figure 2: 5-Year Change in 10th Day Fall Credit Hours by Division and Prefix**



**Table 1: Enrollment Trends, Fall 2004 to Fall 2009**

		Fall Term										% Change			
		2004		2005		2006		2007		2008		2009		1-Yr	5-Yrs
<b>Students</b>															
Official Headcount		5,331		5,444		5,414		5,275		5,374		6,811		26.7%	27.8%
Headcount (Excluding Adult Ed)		5,294		5,431		5,395		5,262		5,374		6,456		20.1%	21.9%
Status	New Students	1,382	26%	1,517	28%	1,572	29%	1,409	27%	1,500	28%	2,161	33%	44.1%	56.4%
	Continuing Students	3,912	74%	3,914	72%	3,823	71%	3,853	73%	3,874	72%	4,295	67%	10.9%	9.8%
Objective	For future job	944	18%	1,011	19%	861	16%	780	15%	810	15%	1,008	16%	24.4%	6.8%
	For current job	285	5%	281	5%	235	4%	199	4%	183	3%	176	3%	-3.8%	-38.2%
	Career exploration	2	0%	6	0%	3	0%	3	0%	2	0%	1	0%	-50.0%	-50.0%
	University transfer	3,594	68%	3,730	69%	3,996	74%	3,994	76%	4,087	76%	4,920	76%	20.4%	36.9%
	Review basic skills	13	0%	10	0%	7	0%	6	0%	9	0%	10	0%	11.1%	-23.1%
	Personal devel	453	9%	389	7%	287	5%	276	5%	271	5%	334	5%	23.2%	-26.3%
GED prep	3	0%	4	0%	6	0%	4	0%	12	0%	7	0%	-41.7%	133.3%	
Sex	Females	3,016	57%	3,130	58%	3,063	57%	2,952	56%	3,016	56%	3,512	54%	16.4%	16.4%
	Males	2,278	43%	2,301	42%	2,332	43%	2,310	44%	2,358	44%	2,944	46%	24.9%	29.2%
Ethnicity	Asian	96	2%	89	2%	98	2%	89	2%	76	1%	108	2%	42.1%	12.5%
	Native American	14	0%	19	0%	10	0%	7	0%	12	0%	17	0%	41.7%	21.4%
	Black	38	1%	43	1%	59	1%	48	1%	50	1%	70	1%	40.0%	84.2%
	Hispanic	320	6%	369	7%	384	7%	377	7%	420	8%	571	9%	36.0%	78.4%
	White	4,791	90%	4,825	89%	4,782	89%	4,632	88%	4,696	87%	5,578	86%	18.8%	16.4%
	Non-resident Alien	35	1%	86	2%	62	1%	109	2%	120	2%	112	2%	-6.7%	220.0%
Age	Age 19 or Younger	1,930	36%	1,961	36%	2,115	39%	2,102	40%	2,237	42%	2,945	46%	31.6%	52.6%
	Age 20-24	1,468	28%	1,512	28%	1,498	28%	1,492	28%	1,518	28%	1,670	26%	10.0%	13.8%
	Age 25-34	749	14%	787	14%	680	13%	667	13%	672	13%	783	12%	16.5%	4.5%
	Age 35-55	1,032	19%	1,036	19%	953	18%	847	16%	815	15%	912	14%	11.9%	-11.6%
	Age 56 or Older	99	2%	115	2%	128	2%	132	3%	123	2%	135	2%	9.8%	36.4%
	Mean Age	26		26		26		26		25		25		0.0%	-3.8%
	Median Age	21		21		21		20		20		20		0.0%	-4.8%
<b>Hours</b>															
Official 10th Day Total		46,121		46,838		47,962		47,430		48,944		63,335		29.4%	37%
10th Day Fulltime Equivalent		3,075		3,123		3,197		3,162		3,263		4,222		29.4%	37%
Total Hours (Excluding Adult Ed)		46,075		46,825		47,943		47,411		48,944		62,582		27.9%	35.8%
Time	Day	27,232	59%	28,695	61%	30,461	64%	30,632	65%	32,255	66%	42,697	68%	32.4%	56.8%
	Evening	14,738	32%	13,620	29%	12,435	26%	11,847	25%	11,233	23%	13,708	22%	22.0%	-7.0%
	Weekend	305	1%	429	1%	536	1%	417	1%	655	1%	862	1%	31.6%	182.6%
	Asynchronous	3,800	8%	4,081	9%	4,511	9%	4,515	10%	4,801	10%	5,314	8%	10.7%	39.8%
Delivery Mode	Traditional	41,176	89%	41,730	89%	41,449	86%	40,611	86%	41,930	86%	54,448	87%	29.9%	32.2%
	Hybrid	54	0%		0%	70	0%	582	1%	437	1%	536	1%	22.7%	892.6%
	Academy	580	1%	636	1%	842	2%	856	2%	833	2%	785	1%	-5.8%	35.3%
	Telecourse	2,097	5%	1,641	4%	1,464	3%	1,350	3%	1,392	3%	768	1%	-44.8%	-63.4%
	On-Line	1,703	4%	2,440	5%	3,047	6%	3,165	7%	3,409	7%	4,546	7%	33.4%	166.9%
	2-Way TV		0%		0%		0%		0%		0%	508	1%	na	na
	Learning Comm	156	0%	132	0%	738	2%	609	1%	732	1%	700	1%	-4.4%	348.7%
Honors	309	1%	246	1%	333	1%	238	1%	211	0%	290	0%	37.4%	-6.1%	
Course Division	Career & Tech Ed	8,219	18%	8,765	19%	8,895	19%	8,998	19%	9,239	19%	11,792	19%	27.6%	43.5%
	Educ and Soc Sciences	8,938	19%	8,705	19%	9,001	19%	9,431	20%	10,376	21%	11,842	19%	14.1%	32.5%
	Humanities	15,993	35%	16,169	35%	16,420	34%	15,123	32%	15,653	32%	20,780	33%	32.8%	29.9%
	Mathematics & Sciences	12,892	28%	12,803	27%	13,183	27%	13,468	28%	13,140	27%	17,534	28%	33.4%	36.0%
	Student Support	33	0%	383	1%	444	1%	391	1%	536	1%	634	1%	18.3%	1821.2%

<sup>1</sup> With the exception of "Official Headcount" and "Official Hours", all statistics exclude Adult Education course enrollment. Adult Ed students who are also enrolled in other credit classes ARE included.

**Table 2: 10th Day Credit Hours by Instructional Area and Division, Fall 2004 to Fall 2009**

		Fall Term						% Change	
		2004	2005	2006	2007	2008	2009	1 Year	5 Year
Career & Technical Education	ACC	1,179	1,179	1,191	1,131	954	956	0%	-19%
	AMT	516	351	441	392	468	497	6%	-4%
	AOM	377	547	561	531	522	627	20%	66%
	BUS	1,172	1,203	1,143	978	1,158	1,488	28%	27%
	CAM	123	33	114	174	96		-100%	-100%
	CIS	1,294	1,511	1,563	1,265	1,212	1,411	16%	9%
	CJS	636	786	744	912	840	1,446	72%	127%
	CLM						295	na	na
	CMT						129	na	na
	DGM				452	498	690	39%	na
	DRT	220	235	174	128	120	152	27%	-31%
	EMS	664	678	554	662	683	808	18%	22%
	ENT	27	24	28	22			-100%	-100%
	FRS	390	462	520	625	555	778	40%	99%
	HCE	20	50					-100%	-100%
	IBS	102	141	144	108	87	99	14%	-3%
	IMT	105	102	75	24	66	72	9%	-31%
	MET	78	39	72	72	93	66	-29%	-15%
	MGT	501	543	588	552	561	708	26%	41%
	MKT	333	363	255	231	291	303	4%	-9%
	NAE	266	406	637	651	783	719	-8%	170%
	NUR					252	468	86%	na
	PAS						70	na	na
RES	216	112	91	88			na	-100%	
TWL						11	na	na	
	<b>Total</b>	<b>8,219</b>	<b>8,765</b>	<b>8,895</b>	<b>8,998</b>	<b>9,239</b>	<b>11,792</b>	<b>28%</b>	<b>43%</b>
Education and Social Sciences	ANT	300	216	390	429	495	600	21%	100%
	ECE	597	695	535	543	587	628	7%	5%
	ECO	744	780	804	729	711	762	7%	2%
	EDU	306	225	216	204	201	288	43%	-6%
	HFE	1,126	1,224	1,356	1,466	1,620	1,629	1%	45%
	HIS	1,155	1,104	1,161	1,377	1,554	2,199	42%	90%
	PLT	534	468	549	558	603	654	8%	22%
	PSY	2,514	2,406	2,409	2,517	2,727	3,222	18%	28%
	SOC	1,662	1,587	1,581	1,608	1,878	1,860	-1%	12%
		<b>Total</b>	<b>8,938</b>	<b>8,705</b>	<b>9,001</b>	<b>9,431</b>	<b>10,376</b>	<b>11,842</b>	<b>14%</b>

**Table 2: Continued**

		Fall Term						% Change		
		2004	2005	2006	2007	2008	2009	1 Year	5 Year	
Humanities	ART	3,081	2,791	2,844	2,421	2,436	3,204	32%	4%	
	ENG	5,325	5,576	5,712	5,384	5,672	6,939	22%	30%	
	FRE	160	212	152	124	156	168	8%	5%	
	GER	180	216	168	144	116	116	0%	-36%	
	HUM	183	195	201	204	207	297	43%	62%	
	IND	31	8	1	13	3	6	100%	-81%	
	JPN	76	40					na	-100%	
	JRN	627	546	657	552	771	876	14%	40%	
	MUS	943	927	842	912	965	1,377	43%	46%	
	PHI	1,875	1,887	2,052	1,920	1,710	2,886	69%	54%	
	RDG	416	469	453	351	450	537	19%	29%	
	SPA	1,334	1,486	1,478	1,188	1,078	1,386	29%	4%	
	SPE	1,623	1,683	1,773	1,788	1,923	2,829	47%	74%	
	THE	139	133	87	122	166	159	-4%	14%	
		<b>Total</b>	<b>15,993</b>	<b>16,169</b>	<b>16,420</b>	<b>15,123</b>	<b>15,653</b>	<b>20,780</b>	<b>33%</b>	<b>30%</b>
Mathematics & Sciences	ANS	116	200	192	200			na	-100%	
	BIO	1,884	2,213	2,240	2,244	2,112	3,024	43%	61%	
	CHM	1,022	952	956	887	983	1,333	36%	30%	
	CSC	28						na	-100%	
	EAS	1,072	896	854	838	847	1,277	51%	19%	
	EGR	64	68	64	68	68	72	6%	13%	
	GEG	440	379	487	595	536	863	61%	96%	
	GEL	84	75	94	96	159	189	19%	125%	
	HRT	369	438	426	388	285	592	108%	60%	
	MAT	7,525	7,338	7,570	7,800	7,774	10,008	29%	33%	
	PHY	184	148	148	196	204	176	-14%	-4%	
	PTS	104	96	152	156	172		-100%	-100%	
		<b>Total</b>	<b>12,892</b>	<b>12,803</b>	<b>13,183</b>	<b>13,468</b>	<b>13,140</b>	<b>17,534</b>	<b>33%</b>	<b>36%</b>
	SSS	MCC		361	396	350	479	606	27%	na
PDV		33	22	48	41	57	28	-51%	-15%	
<b>Total</b>		<b>33</b>	<b>383</b>	<b>444</b>	<b>391</b>	<b>536</b>	<b>634</b>	<b>18%</b>	<b>1821%</b>	

**Table 3: Headcount Enrollment by Program<sup>1</sup>, Fall 2004 to Fall 2009**

		Fall Term						% Change	
		2004	2005	2006	2007	2008	2009	1-Yr	5-Yrs
Transfer/ Baccalaureate	Bacc Crse Enrollee	1,438	1,530	1,554	1,433	1,440	1,136	-21%	-21%
	General Education	159	146	119	122	175	297	70%	87%
	Assoc in Science	1,584	1,638	1,683	1,647	1,656	2,076	25%	31%
	Assoc in Arts	411	405	403	362	358	512	43%	25%
	Assoc in Engineering Sci	77	64	54	73	70	123	76%	60%
	Assoc in Fine Arts - Art	106	91	83	88	101	138	37%	30%
	Assoc in Fine Arts - Music	34	27	28	37	41	58	41%	71%
	<b>Total</b>	<b>3,809</b>	<b>3,901</b>	<b>3,924</b>	<b>3,762</b>	<b>3,841</b>	<b>4,340</b>	<b>13%</b>	<b>14%</b>
Business	Accounting	61	72	70	68	56	77	38%	26%
	Accounting-Cert	22	26	18	20	19	21	11%	-5%
	Tax Practitioner Cert	0	0	2	0	0	1	na	na
	CIS AAS	92	98	71	61	54	64	19%	-30%
	AS/400 Spec Cert	0	1	0	0	0	0	na	na
	Help Desk Cert	2	5	2	3	1	2	100%	0%
	Computer Skills Cert	6	5	6	4	7	7	0%	17%
	Computer User Cert	1	3	0	0	2	2	0%	100%
	Computer Progrmr Cert	7	9	8	3	4	9	125%	29%
	Webmaster Cert	13	7	10	6	1	6	500%	-54%
	PC Support Speclst-Cert	1	5	2	0	2	1	-50%	0%
	Networking Speclst	7	6	6	4	1	4	300%	-43%
	Network Security	0	0	0	0	0	6	na	na
	Digital Media AAS	0	0	2	40	42	89	112%	na
	Internet Gaming Cert.	0	0	0	0	1	3	200%	na
	Animation Cert.	0	0	0	1	0	5	na	na
	Game Development Cert.	0	0	3	3	12	16	33%	na
	Marketing-AAS	10	11	14	13	10	18	80%	80%
	Marketing-Cert	7	6	5	1	5	8	60%	14%
	Marketing Management	1	2	2	3	1	1	0%	0%
	Professional Selling	2	0	0	0	1	1	0%	-50%
	AOM-AAS	18	24	42	27	29	30	3%	67%
	AOM-Cert	12	15	12	9	8	4	-50%	-67%
	Office Skills	6	12	9	4	11	11	0%	83%
	Medical Transcription	15	22	35	34	22	32	45%	113%
	Legal Office	5	5	7	3	6	7	17%	40%
	Chef's Assistant	0	0	0	0	0	14	na	na
	Business Mgt	179	197	188	256	228	249	9%	39%
	Organiz Leadership	3	1	2	3	4	3	-25%	0%
	Bus Mgt Principles Cert	7	10	9	13	27	29	7%	314%
	Entrepreneurship Cert	4	3	5	3	6	5	-17%	25%
	Internatl Bus Studies	2	4	7	4	2	3	50%	50%
	Real Estate	14	17	15	7	0	0	na	-100%
Real Estate-Cert	22	12	6	9	0	0	na	-100%	
Real Estate Appraisal	28	8	6	6	0	0	na	-100%	
Bus/Office Crse Enrollee	108	86	68	66	65	73	12%	-32%	
Marketing Crse Enrollee	11	10	7	2	1	1	0%	-91%	
<b>Total</b>	<b>666</b>	<b>682</b>	<b>639</b>	<b>676</b>	<b>628</b>	<b>802</b>	<b>28%</b>	<b>20%</b>	

**Table 3: Continued**

		Fall Term						% Change	
		2004	2005	2006	2007	2008	2009	1-Yr	5-Yrs
Human and Professional Services	Criminal Justice-AAS	93	106	91	96	102	187	83%	101%
	BNA Cert	48	42	99	93	103	99	-4%	106%
	Devel Disability Aide	3	2	2	0	0	0	na	-100%
	Registered Nursing	0	0	0	0	38	198	421%	na
	ECE-AAS	85	85	74	76	88	102	16%	20%
	ECE-32 Hr Cert	30	34	26	23	29	28	-3%	-7%
	ECE-12 Hr Cert	12	13	12	5	7	13	86%	8%
	FIT-Cert	43	38	34	37	32	26	-19%	-40%
	FIT-AAS	0	0	0	16	28	43	54%	na
	EMT-Paramedic AAS	30	31	33	33	31	38	23%	27%
	EMT-Paramedic Cert	19	16	11	16	16	32	100%	68%
	EMT-Ambulance Cert	8	5	7	12	9	13	44%	63%
	Fire Science AAS	45	74	75	75	94	127	35%	182%
	FRS-Fire Officer I Cert	21	22	11	18	17	38	124%	81%
	FRS-Firefighter II Cert	6	3	2	0	2	5	150%	-17%
	Health Crse Enrollee	10	43	15	18	18	29	61%	190%
	Home Econ Crse Enrollee	8	9	10	11	9	6	-33%	-25%
	Prot Serv Crse Enrollees	8	10	7	11	13	8	-38%	0%
	Service Crse Enrollee	0	1	0	0	0	0	na	na
	<b>Total</b>	<b>469</b>	<b>534</b>	<b>509</b>	<b>540</b>	<b>636</b>	<b>992</b>	<b>56%</b>	<b>112%</b>
Technology	EET-AAS	21	16	11	0	0	0	na	-100%
	EET-Cert	4	3	4	0	0	0	na	-100%
	EET-FAA Option	1	3	2	0	0	0	na	-100%
	Industrial Management	41	25	53	38	35	28	-20%	-32%
	Industrial Supervision	4	7	0	0	1	1	0%	-75%
	Mfg Processes-Cert	2	2	1	0	0	0	na	-100%
	Warehouse/Distribtn-Cert	0	0	0	0	0	2	na	na
	Mechanical Tech	9	0	0	0	0	0	na	-100%
	CAD/Drafting	26	23	18	14	15	22	47%	-15%
	Mechanical Tech -- Cert	1	2	0	0	0	0	na	-100%
	Horticulture	32	36	24	23	28	35	25%	9%
	Greenhouse/Interiorscape	3	4	2	3	0	1	na	-67%
	Gardening Cert	1	1	0	1	0	0	na	-100%
	Turf/Golf Course Mgt Cert	3	3	1	1	0	1	na	-67%
	Landscape/Nursery	9	12	11	9	6	4	-33%	-56%
	Floral Design	11	10	10	15	2	4	100%	-64%
	Machinist Training Cert	6	0	0	0	0	0	na	-100%
	CAM AAS	9	7	27	44	33	51	55%	467%
	CAM. Cert.	5	12	5	5	4	2	-50%	-60%
	Auto Tech AAS	67	48	47	52	50	69	38%	3%
	Auto Maint Tech--Cert	15	12	14	11	14	23	64%	53%
	Auto Tech-Mgt Opt	6	8	8	15	10	19	90%	217%
	Adv Auto Tech Cert	14	8	11	12	8	10	25%	-29%
	Agri Crse Enrollee	14	14	17	11	8	10	25%	-29%
	Tech/Indus Crse Enrollee	21	20	4	1	2	2	0%	-90%
	CAM Crse Enrollee	2	2	0	0	0	0	na	-100%
Mechanic/Repair Crse Enrollee	4	19	39	19	32	21	-34%	425%	
Precision Trades Crse Enrollee	1	2	0	0	0	0	na	-100%	
<b>Total</b>	<b>332</b>	<b>299</b>	<b>309</b>	<b>274</b>	<b>248</b>	<b>305</b>	<b>23%</b>	<b>-8%</b>	
<b>Vocational Skills Total</b>		<b>2</b>	<b>1</b>	<b>1</b>	<b>0</b>	<b>0</b>	<b>0</b>	<b>na</b>	<b>-100%</b>
<b>Grand Total</b>		<b>5,278</b>	<b>5,417</b>	<b>5,382</b>	<b>5,252</b>	<b>5,353</b>	<b>6,439</b>	<b>20%</b>	<b>22%</b>

<sup>1</sup> Table excludes adult education enrollments.

**Figure 3: Student Characteristics**

